

Make a Lasting Impression with Frames and Displays

DISPLAYS

EXTRUSIONS



FRAMES

FLAGS



EZ EXTEND DISPLAYS  
(pg.01)



FABRIC POP UP DISPLAYS  
(pg.11)



EZ TUBE DISPLAYS  
(pg.05)



CASITA CANOPY TENTS® & FLAGS  
(pg.43)



TABLE THROWS  
(pg.55)



RETRACTABLE BANNER STANDS  
(pg.35)



ICON LEGEND

**LIFETIME WARRANTY**

**1 YEAR WARRANTY**

**ADJUSTABLE**  
Display can adjust to accommodate a range of sizes.

**ADJUSTABLE HEIGHT**  
Display can adjust to accommodate a range of banner heights.

**INDOOR USE**  
Banners and stands are recommended for indoor usage.

**OUTDOOR USE**  
Banners and stands are recommended for outdoor usage.

**DOUBLE-SIDED**  
Displays 2 banners back-to-back to enable viewing from both sides.

**SINGLE-SIDED**  
Displays 1 banner on front side only.

**TOOLLESS SETUP**  
Display parts assemble together without the use of tools.

**MAGNET**  
Magnetic strips on sides of panels attach to channel bars on frame.

**HOOK & LOOP**  
Banners attach via hook & loop strips on top and/or bottom.

**CLAMP**  
Top and/or bottom bars clamp to banner.

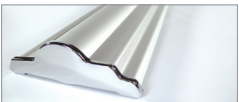
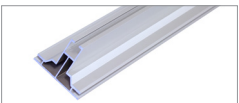
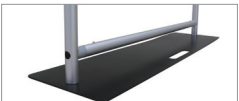
**HEM**  
Banner edges are folded over and stitched with white thread.

**GROMMET**  
Banner edges are hemmed with #2 grommets. Available in brass, silver & black.

**POLE POCKET**  
The top and/or bottom of the banner is folded over and sewn, creating a pocket that accepts dowels.

**FABRIC**

**VINYL**



EZ EXTEND DISPLAYS

01

EZ TUBE DISPLAYS

05

FABRIC POP UP DISPLAYS

11

RESORT EXTRUSIONS

17

ORIGAMI TRUSS SYSTEM

27

TAHOE MODULAR SYSTEM

29

POP UP DISPLAYS

33

RETRACTABLE BANNER STANDS

35

INDOOR BANNER STANDS

39

OUTDOOR BANNER STANDS

43

WALLBOX DISPLAYS

51

HANGING BANNERS

53

TABLE THROWS

55

DISPLAY STANDS

59

LITERATURE STANDS

61

ACCESSORIES

62





# EZ EXTEND DISPLAYS

Set up the EZ Extend in less than five minutes! This sturdy and balanced display includes a steel base, available in widths of 2 ft. to 5 ft., allowing you to display merchandise over your fabric graphic using slatwall accessories like hooks, hangers, shelves and baskets. Add a 1 ft. or 2 ft. extender tubes to increase height from the standard 7.5 ft. to 8.5 ft., 9.5 ft., 10.5 ft. or 11.5 ft. Want it shorter? Just take away tubes for a 5.5 ft. or 6.5 ft. height.

To assemble, secure the longest vertical tubes onto the base using the included allen wrench. Add the bottom horizontal support tube and secure. Snap on the remaining vertical tubes, then top frame with the curved bar to complete. Tilt or lay down EZ Extend to swiftly cover with the pillowcase graphic. Using the industrial-size zipper, zip underneath the bottom support pole, maximizing fabric tension. Choose a single-sided (pick white or black back fabric) or double-sided dye-sublimated stretch fabric print.



## EZ EXTEND DISPLAYS



### EZ EXTEND 2 ft.

Product Code: EZ-ETE24  
Frame Size: 25.5"W x 66" to 138"H  
Frame Depth: 9.75"D (including base)  
Weight: 13 lbs (Frame Only)



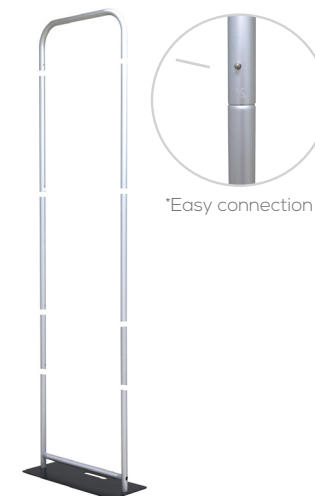
### EZ EXTEND 3 ft.

Product Code: EZ-ETE36  
Frame Size: 37.5"W x 66" to 138"H  
Frame Depth: 9.75"D (including base)  
Weight: 16 lbs (Frame Only)



### EZ EXTEND 4 ft.

Product Code: EZ-ETE48  
Frame Size: 50"W x 66" to 138"H  
Frame Depth: 9.75"D (including base)  
Weight: 21 lbs (Frame Only)



### EZ EXTEND 5 ft.

Product Code: EZ-ETE60  
Frame Size: 61"W x 66" to 138"H  
Frame Depth: 9.75"D (including base)  
Weight: 25 lbs (Frame Only)

## Options

**Silver Bag**  
24" / 36"



**Silver Bag with Wheels**  
48" / 60"



**EZ Tube LED Light**  
(Black or Silver)



EZ STAND DISPLAYS



**EZ STAND 10 ft.**  
Product Code: EZSTND10  
Frame Size: 116"W x 87"H  
Weight: 18 lbs (Frame Only)  
\*Silver Bag is included.



**EZ STAND 5 ft.**  
Product Code: EZSTND60



**EZ STAND 4 ft.**  
Product Code: EZSTND48



**EZ STAND 3 ft.**  
Product Code: EZSTND36

ECONOTUBE FABRIC DISPLAY



**Connection**  
Product Code: ETFD  
Frame Size: 33.5"W x 90"H  
Weight: 6 lbs (Frame Only)

EZ EXTEND CIRCLE DISPLAYS



**EZ EXTEND CIRCLE 3.5 ft.**  
Product Code: EZ-EC42X78  
Frame Size: 42"W x 78"H  
Frame Depth: 10"D (including base)  
Weight: 13 lbs (Frame Only)



**EZ EXTEND CIRCLE 5 ft.**  
Product Code: EZ-EC60X72  
Frame Size: 59.75"W x 72.375"H  
Frame Depth: 10"D (including base)  
Weight: 21lbs (Frame Only)



**EZ EXTEND CIRCLE 7 ft.**  
Product Code: EZ-EC84X87  
Frame Size: 84"W x 87"H  
Frame Depth: 10"D (including base)  
Weight: 25 lbs (Frame Only)



**SMALL EZ BARRIER**  
Product Code: EZBRRSM  
Frame Size: 39"W x 35"H  
Weight: 17 lbs (Frame Only)



Connect frames to make longer or L-shaped barriers.



**LARGE EZ BARRIER**  
Product Code: EZBRRLG  
Frame Size: 78"W x 35"H  
Weight: 20 lbs (Frame Only)







# EZ TUBE DISPLAYS

Sleek and "EZ", our tension fabric systems are a great alternative to standard backwall displays. Quickly assembled in just 5 minutes, slide the tubes together to make the frame and lock in place with a push button snap. Then, simply pull the pillowcase-like graphic over the frame and zip it shut. The zipper, hidden from view, tightens the stretch fabric, beautifully displaying your images. Disassembled, the lightweight frame and graphic fit inside a compact silver bag. The EZ Tube is available in 5 sizes and different styles. Quantity Prices are also available.



**EZ TUBE 8 ft. STRAIGHT**

Product Code: EZT8STR  
Frame Size: 96"W x 89"H  
Weight: 30 lbs (Frame Only)  
\*Silver Bag is included.  
\*includes 2 feet



**Best Seller**  
★★★★★

**EZ TUBE 10 ft. STRAIGHT**

Product Code: EZT10STR  
Frame Size: 112"W x 89"H  
Weight: 34 lbs (Frame Only)  
\*Silver Bag is included.  
\*includes 2 feet

**EZ TUBE 20 ft. STRAIGHT**

Product Code: EZT20STR  
Frame Size: 240"W x 89"H  
Weight: 68 lbs (Frame Only)  
\*Silver Bag is included.  
\*includes 3 feet



**Cases**



**Tabletop EZ Tubes**  
\* 6ft. Tabletop:  
31.5"W x 11.5"H x 5.5"D  
\* 8ft. Tabletop:  
36.5"W x 11.5"H x 5.5" D



**8ft. and 10ft. EZ Tubes**  
\* 48"W x 12"H x 6"D



**20ft. EZ Tubes  
Medium Hard Case**  
• 22"W x 39"H x 17"D



**EZ Tube LED Light**  
(Black or Silver)





**EZ TUBE 8 ft. CURVED**  
 Product Code: EZT8CRV  
 Frame Size: 96"W x 89"H  
 Weight: 28 lbs (Frame Only)  
 \*Silver Bag is included.



**EZ TUBE 10 ft. CURVED**  
 Product Code: EZT10CRV  
 Frame Size: 120"W x 89"H  
 Weight: 32 lbs (Frame Only)  
 \*Silver Bag is included.



**EZ TUBE 20 ft. CURVED**  
 Product Code: EZT20CRV  
 Frame Size: 240"W x 89"H  
 Weight: 85 lbs (Frame Only)  
 \*Medium Hard Case is included.



**EZ TUBE CURVED TABLETOP 6 ft./8 ft.**  
 Product Code: EZT6CRVTT/EZT8CRVTT  
 Frame Size: 72"W x 60"H / 96"W x 60"H  
 Weight: 19 lbs / 24 lbs (Frame Only)  
 \*Silver Bag is included.



**EZ PILLAR 8 ft.**  
 Product Code: EZPIL8  
 Frame Size: 36"W x 96"H x 36"D  
 Weight: 21 lbs (Frame Only)  
 \*Bag is included.



**EZ PILLAR 10 ft.**  
 Product Code: EZPIL10  
 Frame Size: 36"W x 120"H x 36"D  
 Weight: 25 lbs (Frame Only)  
 \*Bag is included.



**EZ TOWER 8 ft.**  
 Product Code: EZTWR8  
 Frame Size: 36"W x 96"H x 36"D  
 Weight: 32 lbs (Frame Only)  
 \*Bag is included.



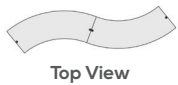
**EZ TOWER 10 ft.**  
 Product Code: EZTWR10  
 Frame Size: 36"W x 120"H x 36"D  
 Weight: 25 lbs (Frame Only)  
 \*Bag is included.



## EZ PILLAR DISPLAYS

## EZ TOWER DISPLAYS

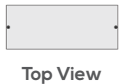




**EZ FABRIC CURVED COUNTER  
S-Shape**  
Product Code: EZ-CRVFABCTR-GS  
Frame Size: 81"W x 38"H x 29.5"D  
Weight: 53 lbs (Frame Only)



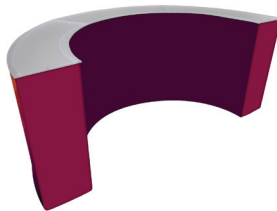
**EZ FABRIC CURVED COUNTER  
Double**  
Product Code: EZ-CRVFABCTR-G2  
Frame Size: 81"W x 38"H x 29.5"D  
Weight: 70 lbs (Frame Only)



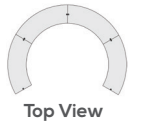
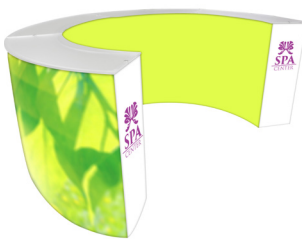
**EZ FABRIC COUNTER**  
Product Code: EZ-FABCTR  
Frame Size: 38.5"W x 38"H x 14.57"D  
Weight: 27 lbs (Frame Only)



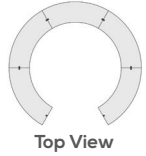
**EZ FABRIC CURVED COUNTER  
Single**  
Product Code: EZ-CRVFABCTR  
Frame Size: 46"W x 38"H x 18"D  
Weight: 35 lbs (Frame Only)



**EZ FABRIC CURVED COUNTER  
Triple**  
Product Code: EZ-CRVFABCTR-G3  
Frame Size: 94"W x 38"H x 46.5"D  
Weight: 105 lbs (Frame Only)



**EZ FABRIC CURVED COUNTER  
Quad**  
Product Code: EZ-CRVFABCTR-G4  
Frame Size: 94"W x 38"H x 63.5"D  
Weight: 140 lbs (Frame Only)



**EZ FABRIC CURVED COUNTER  
Quint**  
Product Code: EZ-CRVFABCTR-G5  
Frame Size: 94"W x 38"H x 88"D  
Weight: 175 lbs (Frame Only)







# FABRIC POP UP DISPLAYS

Fabric Pop Up Displays are the perfect display on the go. They're ready in minutes. The lightweight aluminum alloy frame locks in place using hooks. Interchangeable graphics make it a versatile choice. Easily collapse the frame with front graphic attached and stow in your carry bag.



## RPL FABRIC POP-UP DISPLAYS

**NEW SIZES AVAILABLE:**  
10 x 10 ft., 15 x 10 ft., 20 x 10 ft.

### RPL 30 ft. STRAIGHT

Product Code: RPL12X3  
Frame Size: 345"W x 89"H x 12"D  
Weight: 68 lbs (Frame Only)  
Nylon carry bag is included.



### RPL 20 ft. STRAIGHT

Product Code: RPL8X3  
Frame Size: 240"W x 89"H x 12"D  
Weight: 47 lbs (Frame Only)  
Nylon carry bag is included.



### RPL 15 ft. STRAIGHT

Product Code: RPL6X3  
Frame Size: 180"W x 89"H x 12"D  
Weight: 36 lbs (Frame Only)  
\*Nylon carry bag is included.



#### Options

##### RPL Light



150 Watt  
Halogen Light  
11 ft. cord  
Black or Silver

##### RPL LED Light



LED Light  
9.5' cord  
Black or Silver

##### Nylon Carry Bag







**RPL 8 ft. STRAIGHT**  
Product Code: RPL3X3STR  
Frame Size: 89"W x 89"H x 12"D  
Weight: 21 lbs (Frame Only)  
\*Nylon carry bag is included.



**RPL 8 ft. CURVED**  
Product Code: RPL3X3CRV  
Frame Size: 91.5W x 89"H x 22"D  
Weight: 21 lbs (Frame Only)  
\*Nylon carry bag is included.



**Best Seller**  
★★★★★  
**RPL 10 ft. STRAIGHT**  
Product Code: RPL4X3STR  
Frame Size: 118"W x 89"H x 12"D  
Weight: 26 lbs (Frame Only)  
\*Nylon carry bag is included.



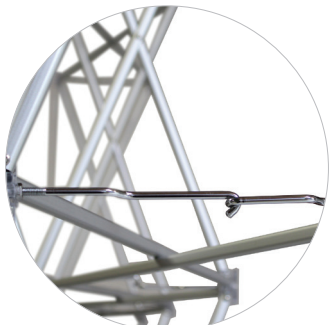
**RPL 10 ft. CURVED**  
Product Code: RPL4X3CRV  
Frame Size: 116.5"W x 89"H x 31"D  
Weight: 26 lbs (Frame Only)  
\*Nylon carry bag is included.



**Best Seller**  
★★★★★  
**READY POP 10 ft. STRAIGHT**  
Product Code: RP4x3STR  
Frame Size: 118"W x 89"H x 12"D  
Weight: 40 lbs. (Frame Only)  
\*Nylon carry bag is included.

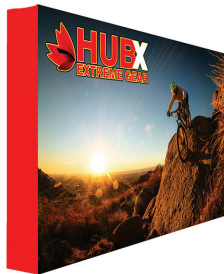


**READY POP 10 ft. CURVED**  
Product Code: RP4x3CRV  
Frame Size: 112"W x 89"H x 24"D  
Weight: 39 lbs. (Frame Only)  
\*Nylon carry bag is included.



Steel Hook

**MORE SIZES AVAILABLE:  
5 x 7.5 ft. AND 7.5 x 5 ft.**



**RPL 5 x 7.5 ft. STRAIGHT**  
Product Code: RPL2X3STR  
Frame Size: 60"W x 90"H x 13.5"D  
Weight: 16 lbs (Frame Only)  
\*Nylon carry bag is included.



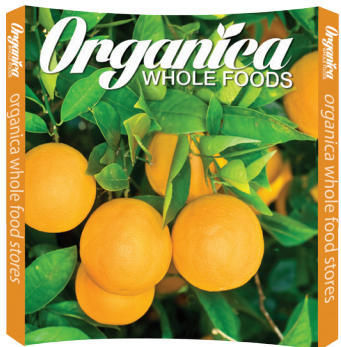
**RPL 7.5 x 5 ft. STRAIGHT**  
Product Code: RPL3X2STR  
Frame Size: 90"W x 60"H x 13.5"D  
Weight: 16 lbs (Frame Only)  
\*Nylon carry bag is included.



**RPL 5 ft. STRAIGHT**  
Product Code: RPL2X2  
Frame Size: 60"W x 60"H x 12"D  
Weight: 12 lbs (Frame Only)  
\*Nylon carry bag is included.



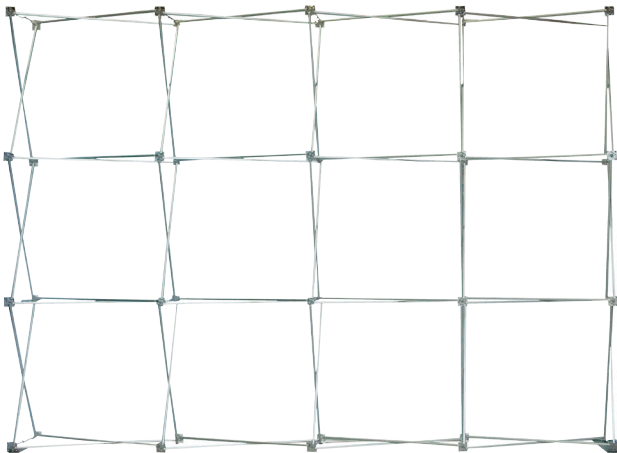
**READY POP 8 ft. STRAIGHT**  
Product Code: RP3x3STR  
Frame Size: 89"W x 89"H x 12"D  
Weight: 38 lbs. (Frame Only)  
\*Nylon carry bag is included.



**READY POP 8 ft. CURVED**  
Product Code: RP3x3CRV  
Frame Size: 90"W x 89"H x 24"D  
Weight: 24 lbs. (Frame Only)  
\*Nylon carry bag is included.



**READY POP COUNTER**  
Product Code: RPCUNTR  
Display Size: 40"W x 40"H x 12.5"D  
Counter Size: 35"W x 15.5"D  
Weight: 27 lbs (Frame Only)  
\*Nylon carry bag is included.



Back of Frame  
Easy to Set Up

**Options**

**Half Hard Case**



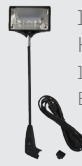
Molded plastic carry case with inset wheels for easy mobility. Case also has a center grip.  
16.5"W x 38.5"H x 15.75"D  
24 lbs.  
For Small & Medium

**Medium Hard Case**



Molded plastic case including wheels and a handle for easy transport.  
22"W x 39"H x 17"D  
31 lbs.  
For Large  
\*Optional graphic wrap

**Ready Pop Light**



150 Watt  
Halogen Light  
11 ft. cord  
Black or Silver

**Ready Pop LED Light**



LED Light  
9.5' cord  
Black or Silver

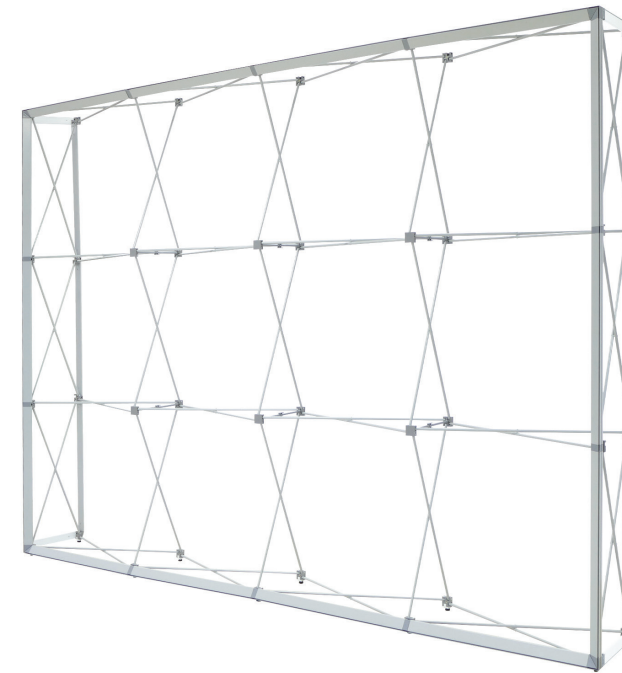




\*For easier connection, please order your graphics without endcaps.

## LUMIÈRE LIGHT WALL DISPLAYS

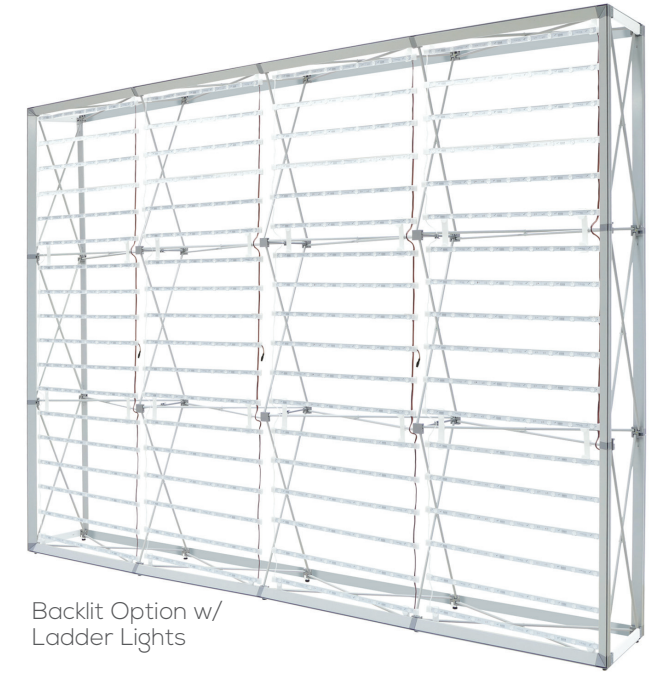
**SIZES AVAILABLE:**  
2.5 x 7.5 ft., 5 x 7.5 ft., 7.5 x 5 ft.,  
7.5 x 7.5 ft., 10 x 7.5 ft. AND 10 x 10 ft.



Product Code: LLW4X3NL  
Frame Size: 117.75"W x 88.75"H x 14.5"D  
Weight: 30 lbs. (Frame Only)

### Frame Only Includes:

- (2) 4-Section Channel Bars
- (4) 3-Section Channel Bars
- (1) Channel Bar Bag
- (1) Carry Bag



Backlit Option w/  
Ladder Lights

Product Code: LLW4X3Frame  
Size: 117.75"W x 88.75"H x 14.5"D  
Weight: 31 lbs. (Frame Only)

### Backlit Frame Only Includes:

- (4) 3-Section Channel Bars
- (4) 4-Section Channel Bars
- (1) Channel Bar Bag
- (1) Carry Bag (for frame)
- (4) Ladder Light Strips
- (4) Bags for Ladder Lights
- (4) Transformers
- (16) Top/Bottom Light Brackets
- (16) Middle Light Brackets
- (4) Male Transformer Connector Cords
- (4) Female Transformer Connector Cords
- (1) Transformer Power Cord



\*For easier connection, please order your graphics without endcaps.





# RESORT EXTRUSIONS

Introducing new product lines for the Resort Extrusions—an expanding family of standard- and custom-size extrusions of varied widths and compositions. Vail and Big Sky join already-existing Resorts Extrusions: Aspen, Mammoth and Whistler. All five Resort Extrusions are aluminum and equipped for Silicone Edge Graphics (SEG), yet each hold true to their individual style. What makes them different? Vail comes in profile widths of 40mm, 60mm and 100mm with a smooth outside finish. Aspen's finish has a line groove, like an indented stripe, for added style. Big Sky is a corner extrusion to create a 3-D display, like the Big Sky Tower or Counter. Furthermore, you can upgrade to toolless connectors for the Vail and Whistler; add lights (ladder or edge-lit) for the Mammoth, Whistler, or Vail\*; add eye hooks for hanging overhead, feet for free-standing, or wall mounts for wall attachment.

\*Only available for the Vail-100D (s-s/d-s), Vail-120D (s-s/d-s), or Vail-60S (s-s).



**ALPINE BOOTH A**  
Product Code: ABA  
Display Size: 114.4"W x 94.5"H x 104.5"D  
\*Flooring not supplied by WS Display.



**ALPINE BOOTH B**  
Product Code: ABB  
Display Size: 112.6"W x 94.5"H x 112.6 "D  
\*Flooring not supplied by WS Display.



**ALPINE BOOTH D**  
Product Code: ABD  
Display Size: 112.6"W x 94.5"H x 16"D  
Flooring not supplied by WS Display.



**ALPINE BOOTH F**  
Product Code: ABF  
Display Size: 226"W x 94.5"H x 16"D  
Flooring not supplied by WS Display.

## CUSTOMIZATION

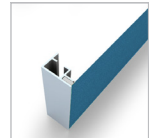
Sometimes it is hard to choose from predesigned configurations when you are trying to fit something right for your space. If you didn't find what you were looking for in our new line of predesigned Alpine Booth configurations, you can Create Your Own Alpine with Alpine CYO.

Please visit our website for further details.

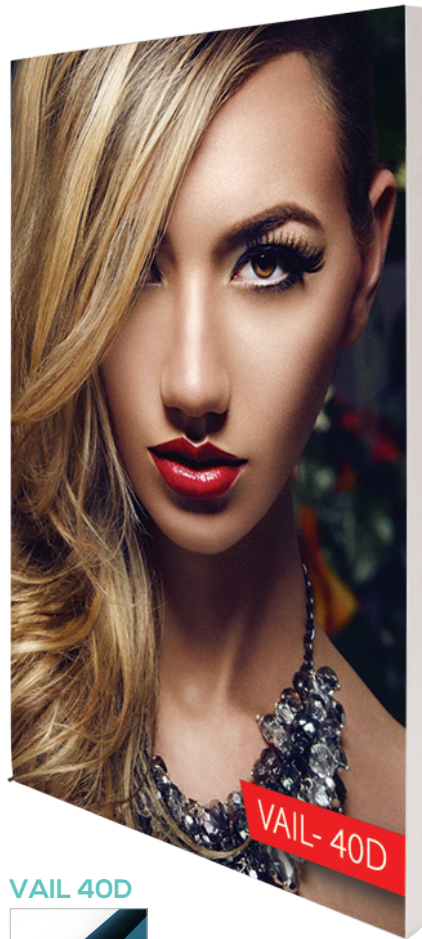




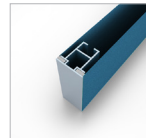
VAIL 40S



- 40mm wide profile
- Single-Sided



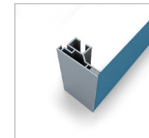
VAIL 40D



- 40mm wide profile
- Double-Sided



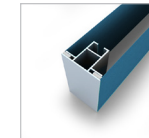
VAIL 60S



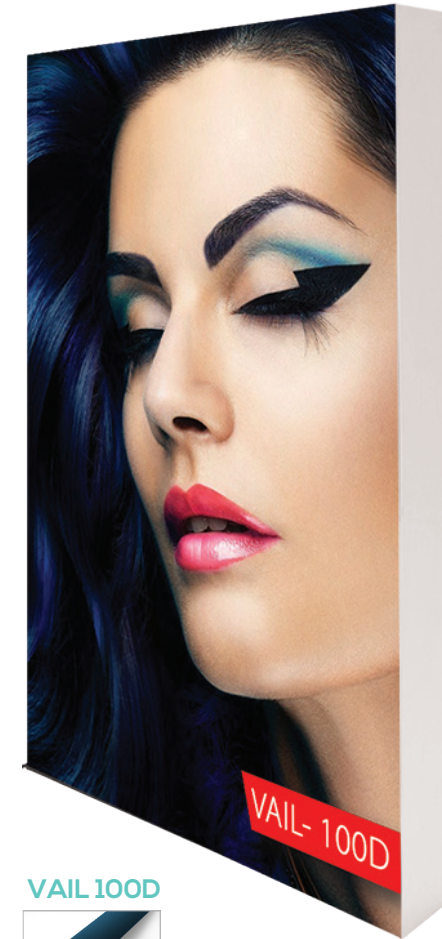
- 60mm wide profile
- Single-Sided



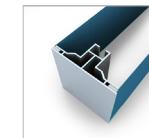
VAIL 60D



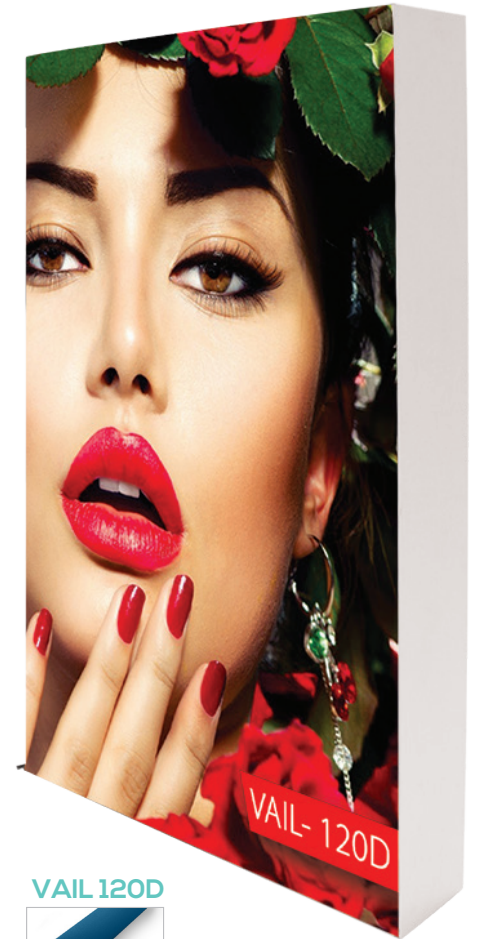
- 60mm wide profile
- Double-Sided



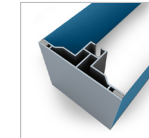
VAIL 100D



- 100mm wide profile
- Double-Sided
- Backlit/Non-Backlit



VAIL 120D

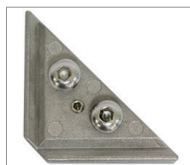


- 120mm wide profile
- Double-Sided
- Backlit/Non-Backlit

AVAILABLE IN SIZES RANGING  
FROM 1 ft. TO 10 ft.



Yeti Side Foot



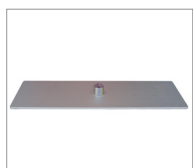
Triangle Lock



Vail Foot



Corner Connector



Flat Foot



Center Connector



Ceiling Hook



Wall Hook



## VAIL TOOLLESS FEATURES

Tool free corner locks and straight connectors that are compatible with all Vail Extrusions.



\* Resort Catalog is also available. Check website for more details.

## Options

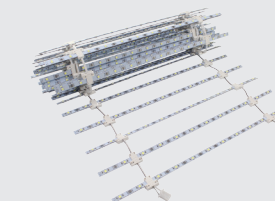
### Light Strip

Product Code: RESORT-LS  
\*Recommended for smaller frames



### Ladder Lights

Product Code: RESORT-LDLS



### Small Light



### Large Light





BIG SKY COUNTER 2 ft.

Product Code: BIGSKYC2X2GP  
Frame Size: 24"L x 40"H x 24"D  
Dimensions: Box 1 (49"x7"x10")  
Box 2 (24"x24"x4")  
Weight: 27 lbs (Frame Only)



BIG SKY COUNTER 4 ft.

Product Code: BIGSKYC4X2GP  
Frame Size: 48"L x 40"H x 24"D  
Dimensions: Box 1 (49"x7"x10")  
Box 2 (24"x24"x4")  
Weight: 40 lbs (Frame Only)



BIG SKY COUNTER 6 ft.

Product Code: BIGSKYC6X2GP  
Frame Size: 72"L x 40"H x 24"D  
Dimensions: Box 1 (73"x7"x10")  
Box 2 (24"x24"x4")  
Weight: 53 lbs (Frame Only)

2 ft. Hardware Package Includes:

- (4) Vertical Extrusion pieces with connectors
- (8) Horizontal Extrusion pieces with connectors
- (1) Acrylic Countertop
- (1) Tool



Top View

4 ft. Hardware Package Includes:

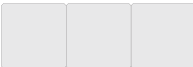
- (6) Vertical Extrusion pieces with connectors
- (12) Horizontal Extrusion pieces with connectors
- (2) Acrylic Countertops
- (1) Tool



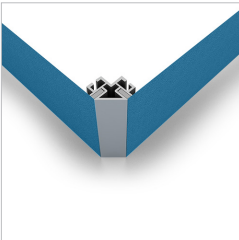
Top View

6 ft. Hardware Package Includes:

- (8) Vertical Extrusion pieces with connectors
- (16) Horizontal Extrusion pieces with connectors
- (3) Acrylic Countertops
- (1) Tool

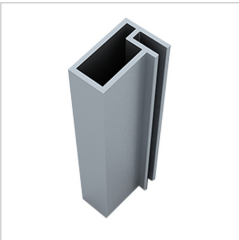


Top View



BIG SKY-32D

- 32mm wide profile
- Double-Sided
- Corner extrusion



BIG SKY-40CG

- 40mm wide profile
- Support extrusion



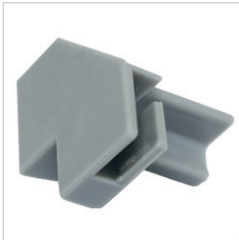
BIG SKY-IC

- Inside Corner Extrusion

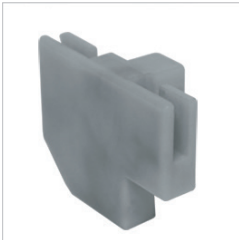


ACRYLIC TOP

- Custom acrylic top



BIG SKY CAP 1



BIG SKY CAP 2



\*Backlit option available.



BIG SKY TOWER 3 ft.

Product Code: BIGSKYT3X8GP  
Frame Size: 3'L x 8'H x 3'D  
Dimensions: 97" x 7" x 10"  
Weight: 26 lbs (Frame Only)

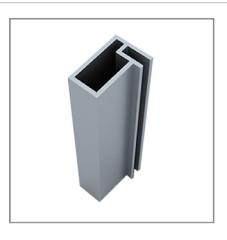
3 ft. Hardware Package Includes:

- (4) Vertical Extrusion pieces with connectors
- (8) Horizontal Extrusion pieces with connectors
- (1) Tool



BIG SKY-32D

- 32mm wide profile
- Double-Sided
- Corner extrusion



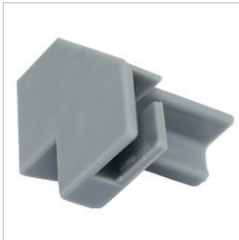
BIG SKY-40CG

- 40mm wide profile
- Support extrusion

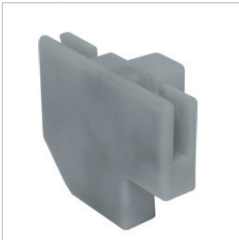


BIG SKY-IC

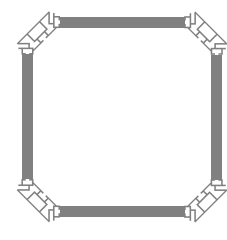
- Inside Corner Extrusion



BIG SKY CAP 1



BIG SKY CAP 2



Top View



BIG SKY TOWER 5 ft.

Product Code: BIGSKYT5X8GP  
Frame Size: 5'L x 8'H x 5'D  
Dimensions: 97" x 7" x 10"  
Weight: 40 lbs (Frame Only)

5 ft. Hardware Package Includes:

- (4) Vertical Extrusion pieces with connectors
- (8) Horizontal Extrusion pieces with connectors
- (1) Tool

Lighting Options

Light Strip

Product Code: RESORT-LS  
\*Recommended for smaller frames

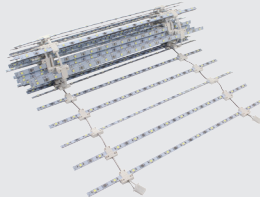


Transformer



Ladder Lights

Product Code: RESORT-LDLTS



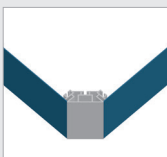
Custom Shape & Size Option

Try the Big Sky Triangle for a 3-sided option instead of 4-sided cube.

Taller or custom size heights are also available. Check our website or call us for more details.



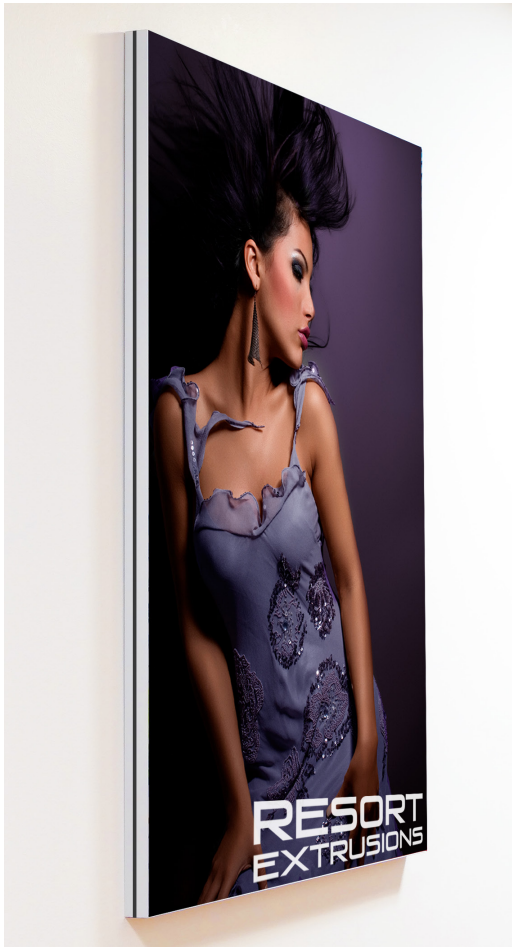
BIG SKY-TRI



BIG SKY-60D



ASPEN FABRIC FRAME



AVAILABLE IN SIZES RANGING FROM 1 ft. TO 10 ft.



Corner Bracket



Frame Thickness: 1.57"

Single-Sided Graphic



Front



Back

Double-Sided Graphic



Front



Back

ASPEN BACKWALL



**ASPEN BACKWALL 20 ft.**

Single-Sided

Product Code: AFBW20x7.5S

Double-Sided

Product Code: AFBW20x7.5D

\*Includes 2 cases

MORE SIZES AVAILABLE:  
7.5 x 7.5 ft., 10 x 7.5 ft. AND  
15 x 7.5 ft.

ASPEN ONYX



**ASPEN ONYX 2 ft.**  
**DOUBLE-SIDED**

Product Code: AFON2

\*Includes Steel Base



**ASPEN ONYX 4 ft.**  
**DOUBLE-SIDED**

Product Code: AFON4

\*Includes Steel Base



**ASPEN ONYX 5 ft.**  
**DOUBLE-SIDED**

Product Code: AFON5

\*Includes Steel Base

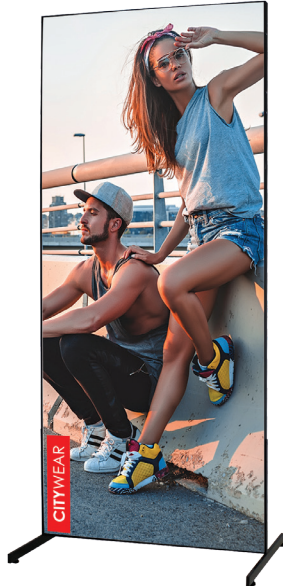
ASPEN T-LEG



**ASPEN T-LEG 2 ft.**

Double-Sided

Product Code: AFT2



**ASPEN T-LEG 3 ft.**

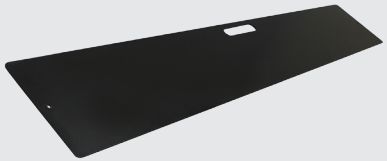
Double-Sided

Product Code: AFT3



Caster (set of 4)

Options



Steel Base

2', 3', 4', 5'





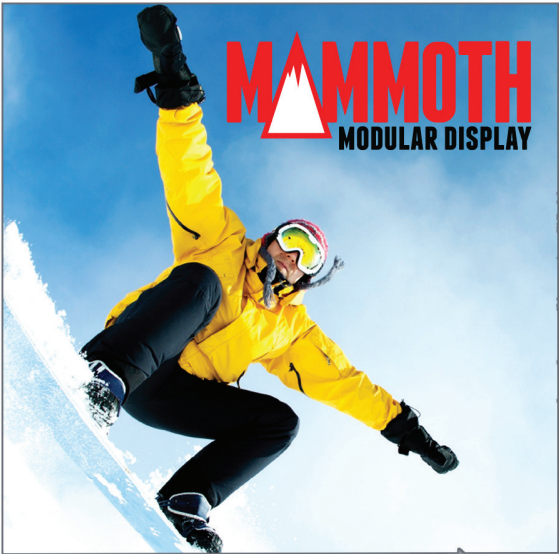
**MAMMOTH 16 x 8 ft. BACKLIT**  
Product Code: MAM16X8LBFG  
Frame Size: 16"W x 7.8"H  
Frame Depth: 4.75"



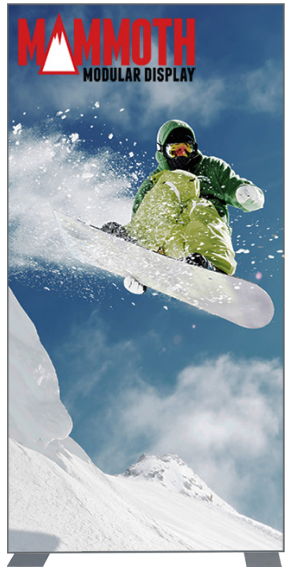
**MAMMOTH 16 x 8 ft. NON-BACKLIT**  
Product Code: MAM16X8DF  
Frame Size: 16"W x 7.8"H  
Frame Depth: 4.75"



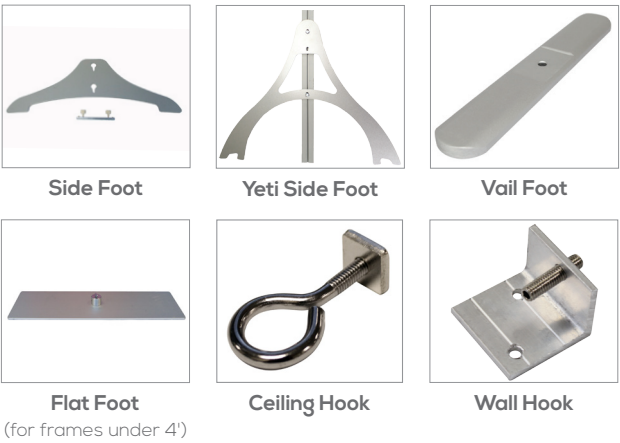
**MAMMOTH 10 x 8 ft.**  
Product Code: MAM10X8  
Frame Size: 10"W x 7.8"H



**MAMMOTH 8 x 8 ft.**  
Product Code: MAM8X8  
Frame Size: 8"W x 7.8"H



**MAMMOTH 4 x 8 ft.**  
Product Code: MAM4X8  
Frame Size: 4"W x 7.8"H



Options



Small Light



Large Light

Light Strip

Product Code: RESORT-LS  
\*Recommended for smaller frames



Transformer







## ORIGAMI TRUSS SYSTEM

Introducing Origami Truss systems! Composite truss is much lighter than the typical aluminum or steel Truss on the market, yet load bearing. One person setup time is 30-45 minutes. Truss conveniently collapses flat for super easy storage. Dye-sublimated single-sided fabric graphics are finished with 1/4" pole pockets on top and bottom and connect to frame with aluminum rods and clips. Accessorize with shelves, counter, lights, and brochure holder. Choose from 3 selections.



### ORIGAMI TRUSS SYSTEM BACKWALL

Product Code: OTSBACKWALL  
Display Size: 109"W x 96"H x 15.75"D



### ORIGAMI TRUSS SYSTEM CORNER

Product Code: OTSCORNER  
Display Size: 120"W x 96"H x 120"D



### ORIGAMI TRUSS TOWER

Product Code: OT-TOWER  
Display Size: 60.5"W x 203.5"H x 60.5"D

#### Options



Brochure Holder

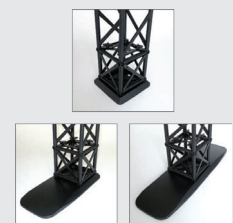


LED Light

Halogen Lights



Monitor Bracket

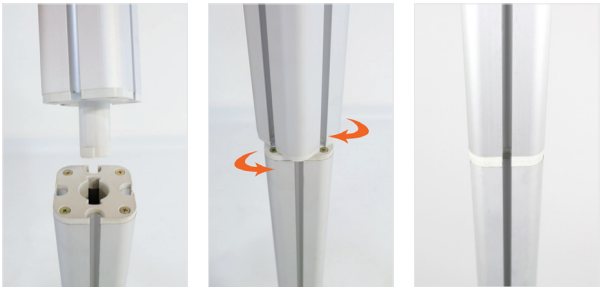


Different foot options





**TAHOE TWISTLOCK 10 ft. X**  
Product Code: TTLX  
Display Size: 117.3"W x 96"H  
Dimensions: 18" x 21" x 53"  
Weight: 120 lbs (Hardware Only)  
\*Twistlock Case is included.



**TAHOE TWISTLOCK 13 ft. Y**  
Product Code: TTLY  
Display Size: 158"W x 96"H  
Dimensions & Weight:  
Box 1 = 18" x 21" x 53" / 150 lbs  
Box 2 = 24" x 24" x 6" / 12 lbs  
(Hardware Only)  
\*Twistlock Case is included.



# TAHOE MODULAR DISPLAYS

A modular display with a twist, the Tahoe Twistlock has been redesigned to be completely toolless. Replicated to keep the striking look of the Classic Tahoe, the Tahoe Twistlock is much easier to set up and 50% faster. Simply twist the pieces together to lock into place and untwist to disassemble. The Tahoe Twistlock is available in 10ft., 13ft., and 20ft. sizes and is fully customizable, making it the perfect modular back wall display.

Did we mention it's toolless?

### Options



**Twistlock Case**  
Inner Dimensions:  
19" x 16" x 50"  
Outer Dimensions:  
21" x 17" x 53"



Acrylic Table



Acrylic Side Panel



Acrylic Shelves  
Small / Large







### TAHOE TWISTLOCK 20 ft. Z

Product Code: TTLZ  
 Display Size: 243"W x 96"H  
 Dimensions & Weight:  
 Box 1 = 18" x 23" x 53" / 149 lbs  
 Box 2 = 18" x 23" x 53" / 149 lbs  
 (Hardware Only)  
 \*Twistlock Case is included.



### TAHOE TWISTLOCK 30 ft. V

Product Code: TTLV  
 Display Size: 352.13"W x 96"H  
 Dimensions & Weight:  
 Box 1 = 18" x 23" x 53" / 126 lbs  
 Box 2 = 18" x 23" x 53" / 130 lbs  
 (Hardware Only)  
 \*Twistlock Case is included.

### SLATWALLS FOR TWISTLOCK

Available for the Y, Z and Rack models, add slatwalls to replace the small graphic panel area. Please call us for more info.



### TAHOE TWISTLOCK RACK

Product Code: TTLRACK  
 Display Size: 71.5"W x 96"H  
 Dimensions = 18" x 21" x 53"  
 Weight: 108 lbs (Hardware Only)  
 \*Twistlock Case is included.



### TAHOE TWISTLOCK 10 ft. W

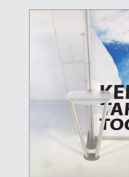
Product Code: TTLW  
 Display Size: 117.3"W x 96"H  
 Dimensions = 19" x 21" x 53"  
 Weight: 132 lbs (Hardware Only)  
 \*Twistlock Case is included.



### CUSTOMIZATION

Have a vision? Make your conceptual ideas become a reality! Use the twistlock poles to construct your own original version of the Tahoe Twistlock display. For added style, choose from a variety of Tahoe accessories to adorn your display.

Call us for further details.



Acrylic Table



Acrylic Side Panel



Acrylic Shelves  
Small / Large





# POP UP DISPLAYS

The Big Wave Pop Up Display, a trade show classic, comes with everything you need to effectively promote your product. Designed specifically to fit 10ft. trade show booths, the straightforward look of the Big Wave gives a professional presentation. Expand the geometric aluminum frame, click locking mechanisms into place, and hang the graphic panels to complete set up. Various styles and sizes available up to 20ft wide. Choose PVC or laminate material.



20 ft. GULLWING



Product Code: PUGW20G  
Size: 20'W x 7.4'H x 3.5'D

20 ft. SERPENTINE



Product Code: PUSP20G  
Size: 20'W x 7.4'H x 2.7'D

10 ft. BIG WAVE



Product Code: PU10G  
Size: 10'W x 7.4'H x 3.5'D

9 ft. STRAIGHT



Product Code: PU9G  
Size: 9'W x 7.4'H x 1'D

TABLETOP POP-UP

8ft.



\*Tables not supplied by WS Display.  
Product Code: PUTT8  
Size: 8'W x 5'H x 2'D

6ft.



Product Code: PUTT6  
Size: 6'W x 5'H x 1.5'D



Accessories

- Podium
- Aluminum Frame
- Halogen Lights (150W)
- Cords
- Magnetic Strip Roll
- Hanging Hardware Kit
- Channel Bars

Fabric Panel Color

\*Fabric panels not available for Half Hard Cases.

-  **BLACK**
-  **SILVER**  
PMS 423C
-  **BLUE**  
PMS 281C

Podium Graphic

\* Graphic podium wrap is optional.  
(PVC)  
(LAMINATED DISPLAY FILM)



Options



**Shelf**  
27.165" width / 11.5" depth



**Vegas Light**  
Black  
50W / 6.2' cord

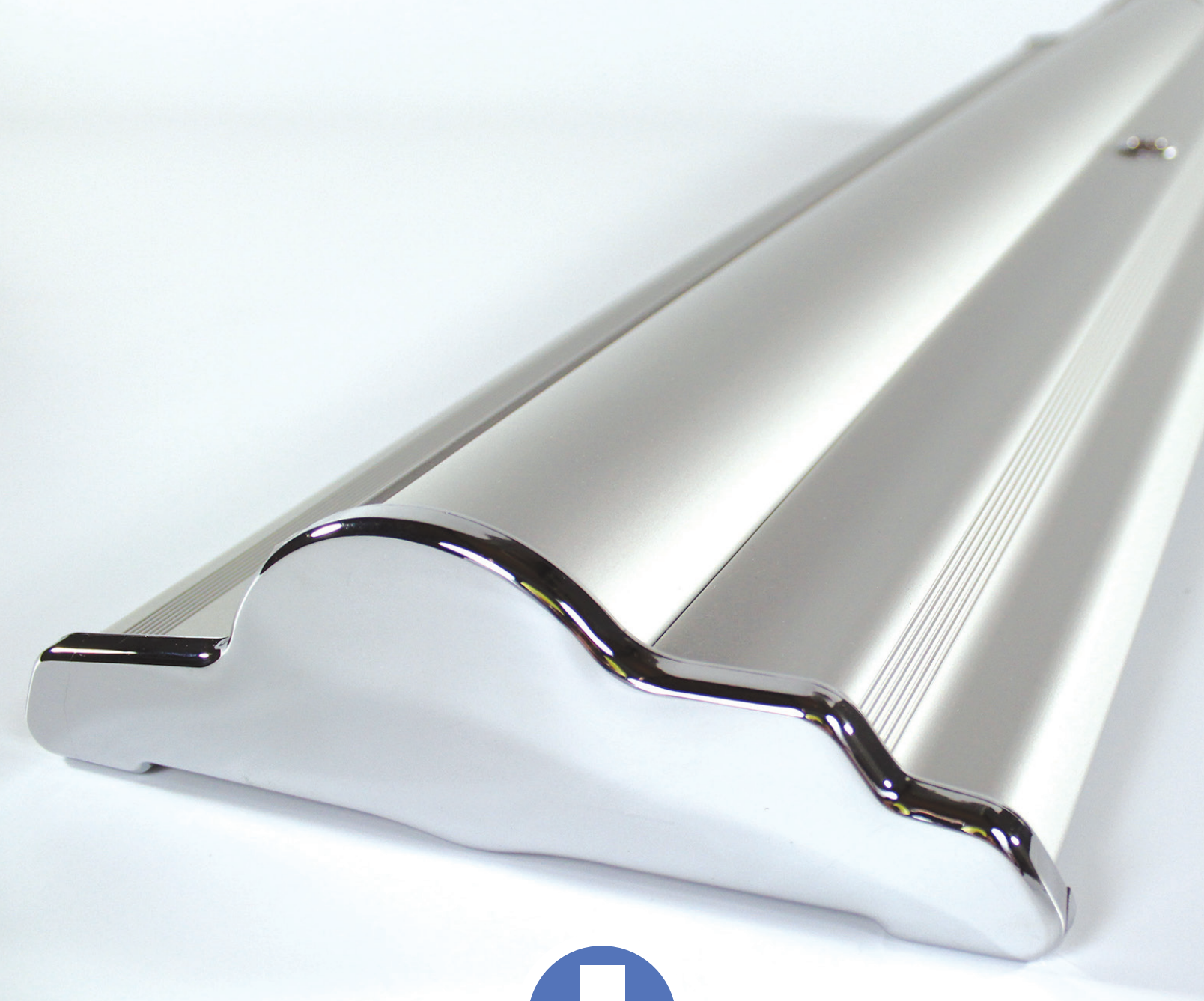


**Halogen Light**  
Black  
150W / 6.3' cord



**LED Light**  
Black or Silver -  
9.5' cord





# RETRACTABLE BANNER STANDS

Step up your game with the Silverstep retractable banner stand. Uniquely designed to be durable, stylish and reusable, the Silverstep is a fan-favorite and perfect for any occasion. With 4 widths available and a telescopic pole, the Silverstep offers a wide range of dimensions. Place the base on the ground, assemble telescopic pole, pull out graphics, and affix to pole. Graphics are easily changeable due to the hook and loop attachment on the canvas leader panel (with a 6" bleed). Deluxe travel bag included. Lifetime warranty on hardware.



**SILVERSTEP® 24 in.**  
Product Code: SS24  
Size: 24"W x 85"H to 92"H  
Base Width: 25.5"  
Weight: 12 lbs (Stand Only)



**SILVERSTEP® 36 in.**  
Product Code: SS36  
Size: 36"W x 69"H to 92"H  
Base Width: 37.6"  
Weight: 16 lbs (Stand Only)



**SILVERSTEP® 48 in.**  
Product Code: SS48  
Size: 48"W x 69"H to 92"H  
Base Width: 49.5"  
Weight: 21 lbs (Stand Only)



**SILVERSTEP® 60 in.**  
Product Code: SS60  
Size: 60"W x 69"H to 92"H  
Base Width: 61.65"  
Weight: 24 lbs (Stand Only)

## SILVERSTEP® TABLETOP



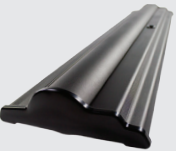
**SILVERSTEP® TABLETOP 24 in.**  
Product Code: SSTT24  
Adjustable Height: 45" to 76"

**SILVERSTEP® TABLETOP 36 in.**  
Product Code: SSTT36  
Adjustable Height: 36" to 59"

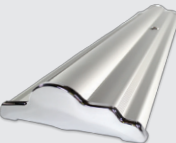
**SILVERSTEP® TABLETOP 48 in.**  
Product Code: SSTT48  
Adjustable Height: 36" to 59"

**SILVERSTEP® TABLETOP 60 in.**  
Product Code: SSTT60  
Adjustable Height: 36" to 59"

### Options



**BLACK** (available for 24in. & 36 in.)



**SILVER** (available for all widths)





Silver (all widths)



Black (33.5" only)



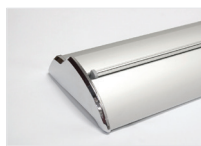
\*Nylon Bag is included.

### ECONO ROLL

Product Code: ER24 / ER31.5 / ER33.5 / ER36  
Total Display Height: 82"  
Graphic Size: 24"W / 31.5"W / 33.5"W / 36"W x 80"H  
Graphic Material: Super Flat Vinyl  
Base Size: 24.5"W/32"W/34"W/36.5"W x 3.5"H x 3.5"D (15"D with feet)  
\*(24" stand has one foot.)



\*Travel bag is included.



\*Travel bag is included.



\*Travel bag is included.



### STEPPY 33.5 in.

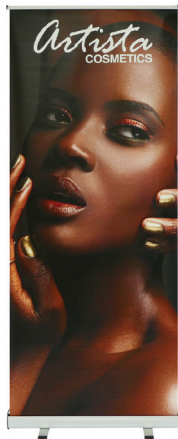
Product Code: STPY  
Graphic Size: 33.5"W x 69" to 92"H  
Graphic Material: Super Flat Vinyl

### CONTOUR 33.5 in.

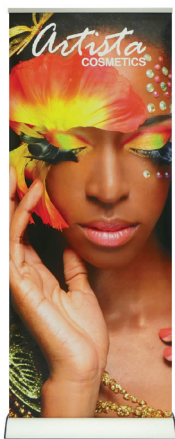
Product Code: CTR335  
Graphic Size: 33.5"W x 69" to 92"H  
Graphic Material: Super Flat Vinyl

### MAUI 33.5 in.

Product Code: MAUI  
Graphic Size: 33.5"W x 80" H  
Graphic Material: Super Flat Vinyl



\*Travel bag is included.



\*Travel bag is included.



### MOZZIE ROLL UP

Product Code: MZRUP  
Graphic Size: 33.5"W x 80"H  
Graphic Material: Super Flat Vinyl  
Weight: 6 lbs (Stand Only)

### BRUMBY ROLL UP

Product Code: BRRUP  
Graphic Size: 33.5"W x 80"H  
Graphic Material: Super Flat Vinyl  
Weight: 11 lbs (Stand Only)



\*Travel bag is included.



### PUGGLE ROLL UP

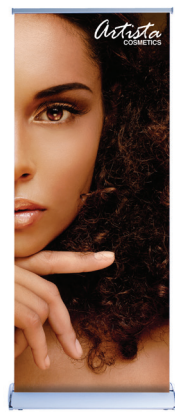
Product Code: PGRUP  
Graphic Size: 33.5"W x 64"H / 72"H / 84"H / 90"H  
Graphic Material: Super Flat Vinyl  
Weight: 12 lbs (Stand Only)



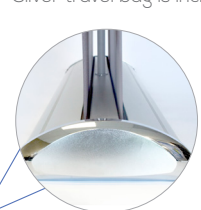
\*Travel bag is included.

### PORTABLE ROLL UP

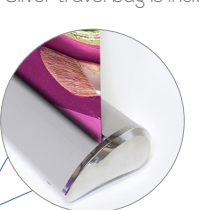
Product Code: PR24 / PR33.5  
Total Display Height: 82"  
Graphic Size: 24"W x 80"H / 33.5"W x 80"H  
Graphic Material: Super Flat Vinyl



\*Silver travel bag is included.



\*Silver travel bag is included.



\*Silver travel bag is included.

### SILVERWING 33.5 in.

**Single-Sided**  
Product Code: SW1  
Graphic Size: 33.5"W x 69 to 92"H  
Graphic Material: Super Flat Vinyl  
Base Size: 35"W x 3"H x 8.5"D  
**Double-Sided**  
Product Code: SW2  
Graphic Size: 33.5"W x 69 to 80"H  
Graphic Material: Super Flat Vinyl  
Base Size: 35"W x 3 "H x 8.5"D



### DOUBLE STEP

Product Code: DS24 / DS36  
Graphic Size: 24"W x 74"H / 36"W x 69" to 74"H  
Graphic Material: Super Flat Vinyl / Roll Up Fabric  
\*This cartridge only works with thin material.



### BABYSTEP

Product Code: BS33.5 / BS36 / BS39.25  
Graphic Height: 69" to 74"  
Graphic Width: 33.5" / 36" / 39.25"  
Graphic Material: Super Flat Vinyl / Roll Up Fabric  
Base Width: 34" / 37" / 40"  
Weight: 16 lbs / 17 lbs / 18 lbs  
\*Banner attaches by hook & loop on the bottom.



### Options



Silver Light (Black or Silver)





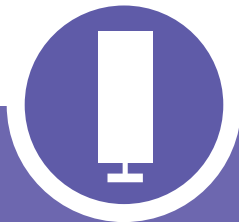
Carry bag is included.



Carry bag is included.

**SLIDER**  
Product Code: SLD  
Frame Width: 81" to 120"  
Frame Height: 41.5" to 96"

**MINI SLIDER**  
Product Code: SLD-MINI  
Frame Width: 37.5" to 70.5"  
Frane Height: 37" to 96"



# INDOOR BANNER STANDS

Indoor banner stands offer a variety of dimensions to accommodate all of your display needs. A lightweight aluminum frame and quick and easy set-up allow for a professional display in seconds.



## Options



Mini Spot Light

(Color: Black or Chrome)  
Cord: 11.25 ft.  
50 Watt



EZ Tube LED Light  
(Black or Silver)





**GRASSHOPPER ADJUSTABLE**  
(STAND ONLY)  
Product Code: GSM, GMD, GLG  
Graphic Material: Scrim / Hybrid Vinyl



**X BANNER STAND**  
(STAND ONLY)  
Product Code: XSM, XMD, XLG  
Graphic Material: Scrim / Hybrid Vinyl



**NINJA STAR DOUBLE-SIDED**  
(STAND ONLY)  
Product Code: NIN  
Graphic Material: Roll Up Fabric



**ZEN BAMBOO**  
(STAND ONLY)  
Product Code: ZEN  
Graphic Material: Scrim / Hybrid Vinyl



**ECONOM-X SMALL / LARGE**  
(STAND ONLY)  
Product Code: EXSM / EXLG  
Graphic Material: Scrim / Hybrid Vinyl



**L BANNER STAND 24" / 36"**  
**24"** (STAND ONLY)  
**36"** (STAND ONLY)  
Product Code: L24, L36  
Graphic Material: Hybrid / Super Flat Vinyl  
or Roll Up Fabric

Optional Grasshopper Bag \$6.00



Small Medium/Large  
Size: 6" x 44" Size: 6.5" x 55.5"

Optional X Bag \$15.00



XSM XMD / XLG  
Size: 5" x 33" x 2.75" Size: 5" x 44" x 2.75"

Ninja Bag (Included)



Size: 50" x 4.5" x 2.5"

Nylon Bag (Included)



Size: 44" x 5.5"

Nylon Bag (Included)



Size: 44" x 5.5"

L Banner Stand Bag (Included)



L24 L36  
Size: 29" x 4.5" Size: 39" x 4.5"

## CLASSIC BANNER STAND



**LARGE (36 in.)**  
Product Code: BN3  
Graphic Width: 36"  
Graphic Height: 24" to 112"



Black Silver



**MEDIUM (24 in.)**  
Product Code: BN2  
Graphic Width: 24"  
Graphic Height: 24" to 96"



Black Silver

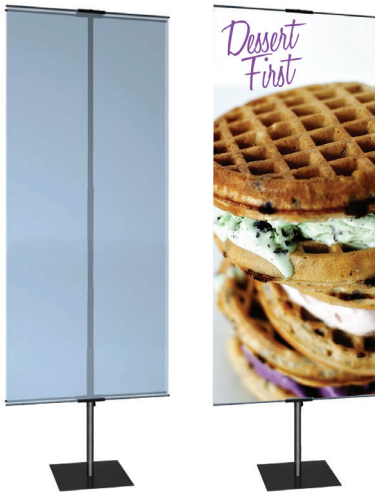


**SMALL (12 in.)**  
Product Code: BN1  
Graphic Width: 12"  
Graphic Height: 24" to 42"

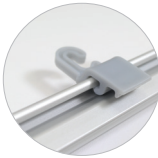


Black

## PROMO STAND DOUBLE



Product Code: PM  
Graphic Size: 24" W x 36" to 72"H  
Graphic Material: Roll Up Fabric



**MORE SIZES AVAILABLE:**  
3 ft., 5 ft. AND 7 ft. WIDTHS,  
2 ft. TO 10 ft. HEIGHTS

### Options



**Travel Base**  
\*(Medium & Large Banner only)



**Travel Bag**  
Travel bag is for stand with travel  
base only.

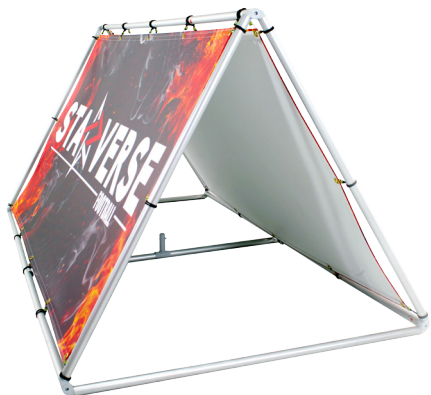


**Clamp Light (for L Banner)**



**LED Clamp Light (for L Banner)**





**Frame Only**  
Product Code: FND-FRM  
Display Size: 81.5"W x 37"H x 42"D

**Single-Sided Graphic Package**  
Product Code: FNDG1  
Graphic Material: Scrim Vinyl

**Double-Sided Graphic Package**  
Product Code: FNDG2  
Graphic Material: Scrim Vinyl

OUTDOOR BANNER STANDS



OUTDOOR BANNER STANDS

Draw brand awareness outdoors! Get a custom flag or canopy tent to easily promote your product or service in a outdoor setting! Choose from variety of shapes, sizes and bases. Flag graphics are full-color, edge-to-edge and dye-sublimated. Canopy tents are full-color, edge-to-edge and UV printed, dye-sublimated or heat pressed using a 1 or 2 color logo.



**OUTDOOR BANNER WALL**  
Product Code: OBWG1  
Display Size: 8'W x 9'H  
Graphic Material: UV Tent Fabric  
Includes carry bags



**ZEPHYR**  
Product Code: ZEP  
Graphic Material: Scrim Vinyl



**ZEPHY**  
Product Code: ZPYG  
Graphic Material: Scrim Vinyl



CASITA CANOPY TENTS® FULL COLOR PRINT



**10 ft. UV TENT PACKAGE**  
Product Code: CAS-CST10UV  
Display Size: 10'W x 10.8'H  
Graphic Material: UV Tent Fabric

- Features**
- Hexagonal legs have a 40mm girth
  - Aluminum construction weighs 43 lbs



**10 ft. CASITA CANOPY STEEL**  
Product Code: CASTL-CST10UV  
Display Size: 10'W x 10.8'H  
Graphic Material: UV Tent Fabric

- Features**
- Square Legs have a 28mm girth
  - Steel construction weighs 60 lbs



**10 ft. CASITA CANOPY HEAVY DUTY**  
Product Code: CASDLX  
Display Size: 10'W x 10.8'H  
Graphic Material: UV Tent Fabric

- Features:**
- Hexagonal legs have a 50mm girth
  - Aluminum construction weighs 65 lbs
  - Springs in frame give graphic perfect tension



**5 ft. UV TENT PACKAGE**  
Product Code: CASTL-CST5UV  
Frame Size: 59.75"W x 103.25"H  
Graphic Material: UV Tent Fabric



**15 ft. UV TENT PACKAGE**  
Product Code: CAS-CST15UV  
Display Size: 15'W x 10.8'H  
Graphic Material: UV Tent Fabric



**20 ft. UV TENT PACKAGE**  
Product Code: CAS-CST20UV  
Display Size: 20'W x 10.8'H  
Graphic Material: UV Tent Fabric



Leg height is adjustable.



\*Graphic Package Includes: Aluminum Frame, Black Nylon Bag, Printed Canopy, and Rope & Stakes

- UV Material
- Water resistant
  - Vivid color
  - High quality finish



\*Graphic Package Includes: Aluminum Frame, Black Nylon Bag, Printed Canopy, and Rope & Stakes  
\*Backwall & Sidewall are optional.

Optional Flag (small)  
Flag Holder w/  
Adjustable Leg



Product Code: CAS-CST10  
Display Size: 10'W x 10.8'H  
Graphic Material: Classic Tent Fabric

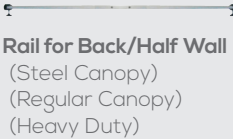
Options



Travel Bag w/ Wheels



Flag Holder



Rail for Back/Half Wall  
(Steel Canopy)  
(Regular Canopy)  
(Heavy Duty)



La Caja Case



Sand Bag



Black Nylon Bag (default)

10 ft. CLASSIC CASITA CANOPY TENTS®



CASITA CANOPY TENTS® STOCK COLOR

Blank (No Logo)



Product Code: CAS-STK  
Canopy Material: Poly-brand

Heat Press: 1 Color Logo



Heat Press: 2 Color Logo



AVAILABLE CANOPY TOP COLORS:

- Blue PMS 286C
- Red PMS 485C
- White
- Green PMS 354C
- Black 10ft ONLY

\*Graphic Package Includes: Aluminum Frame, Black Nylon Bag, Canopy, and Rope & Stakes

AVAILABLE LOGO COLORS:

- Blue PMS 2945C
- Dark Blue PMS 282C
- Green PMS 348C
- Dark Red PMS 201C
- Yellow PMS 124C
- Black
- White

LOGO SPECIFICATIONS:

**ACCEPTABLE**

1st 2 COLOR LOGO  
zakenkantoor  
**SMITS**  
VERZEKERINGEN

2nd

1 COLOR LOGO 1st  
**Mandalay**  
LUXURY DIVISION

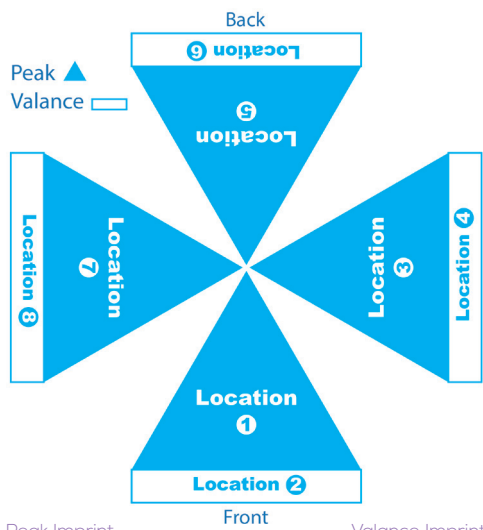
**UNACCEPTABLE**

GRADIENTS  
DROP SHADOWS  
Tactical Vision  
Diseño Grafico & Web

MORE THAN 2 COLORS  
Servicio al Cliente

TO COMPLEX  
AntiParticle

\*Logo(s) that have more than 2 colors or are too complex will not work for the Heat Press system.



Peak Imprint  
52" x 28"

Valance Imprint  
78" x 10"

SKYCAP UMBRELLA FULL COLOR PRINT



HEXAGON UMBRELLA

Product Code: SUHEX  
Frame Size: 8' Diameter x 7.5' H  
\* Square base is optional.



SQUARE UMBRELLA

Product Code: SUSQR  
Frame Size: 9.2' Diameter x 7.5' H  
\* Square base is optional.

SKYCAP UMBRELLA STOCK COLOR

Blank (No Logo)



Heat Press: 1 Color Logo



Heat Press: 2 Color Logo



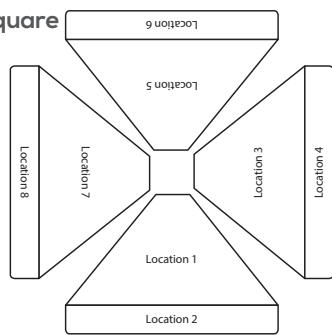
AVAILABLE UMBRELLA TOP COLORS:

- Blue PMS 286C
- Black
- Red PMS 485C
- White

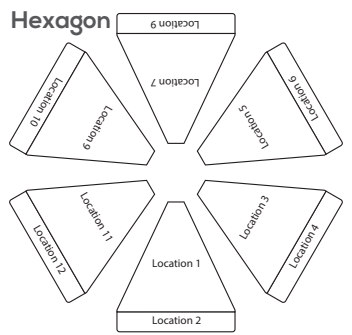
AVAILABLE LOGO COLORS:

- Blue PMS 2945C
- Dark Blue PMS 282C
- Green PMS 348C
- Dark Red PMS 201C
- Yellow PMS 124C
- Black
- White

Square



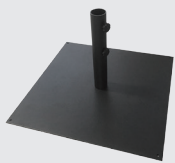
Hexagon



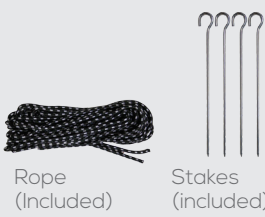
Valance Imprint  
Square: 47" x 5"  
Hexagon: 47" x 7"

Peak Imprint  
Square: 25" x 17"  
Hexagon: 25" x 28"

Options



Square Base for Umbrella



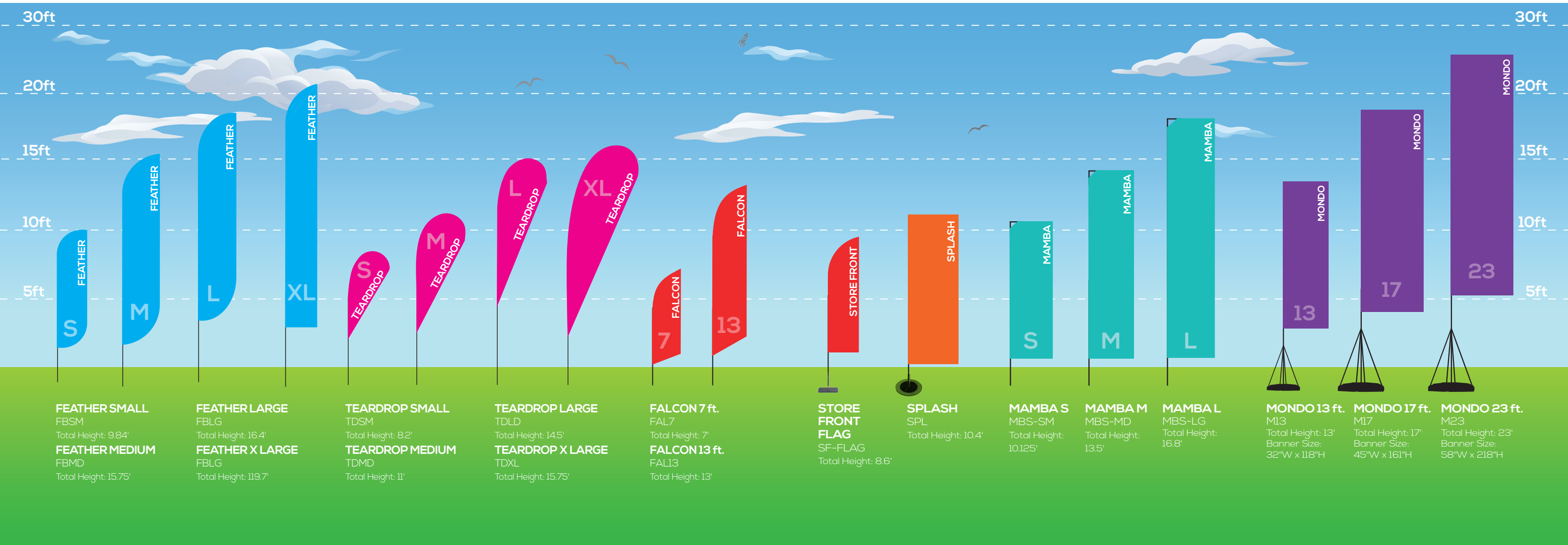
Rope (Included)

Stakes (Included)



Nylon Bag is included.





Options



Spike Base

Perfect for displaying in the grass or dirt.

Price

(Feather/Teardrop)  
(Falcon)



X Base

The standard X base for displaying on flat ground.

Size: Small, Medium, Large & XL

Price:



Water Bag for X Base  
(Optional)



Water Base  
(Optional)  
For Feather, Teardrop & Mamba



Fixed Mount Bases for Falcon  
\$11.00 (Optional)



Triangle Falcon Base  
For displaying in the grass or dirt for Falcon Flag.  
Price:

Options



Mamba Spike Base



Mamba X Base & Water Bag



Splash Base  
(Included)



Mondo Base  
(Included)



Single-Sided

Image is printed on 1 side of the banner for single-sided displays. The back side shows the see-through mirror image of the front side.  
Material: Mesh Fabric



Double-Sided

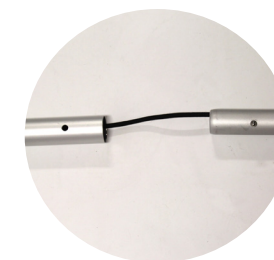
Two single-sided banners are sewn back to back enabling a double-sided display. A block out material is sewn between the banners to prevent light from shining through.  
Material: Mesh Fabric





## WALLBOX DISPLAYS

Advertise gallantly with the Wallbox fabric display, a 3-D portable unlike anything you've ever seen. Use it vertically, stretching tall like a tower, or horizontally as a barrier wall. Constructed with the same aluminum tubing as the Skybox hanging banners, set up is a snap and completely toolless! With push button snap locks, the tubes connect together. Inside, the tubes are equipped with internal bungee cords to help guide the proper connections. Fabric envelops the whole frame, and zips shut at the top, creating a soft, seamless look. Printed graphics available on front, back, and endcaps. Carry bag included.



Frame Connection

### WALLBOX 20 x 8 ft.

Product Code: WB20x8  
Frame Size: 240"x 96"x 18"  
Weight: 45 lbs (Stand Only)



### WALLBOX 8 x 10 ft.

Product Code: WB8x10  
Frame Size: 96"x 120"x 18"  
Weight: 28 lbs (Stand Only)

### WALLBOX 10 x 8 ft.

Product Code: WB10x8  
Frame Size: 120"x 96" x 18"  
Weight: 28 lbs (Stand Only)



### WALLBOX 15 x 8 ft.

Product Code: WB15x8  
Frame Size: 180" x 96" x 18"  
Weight: 37 lbs (Stand Only)

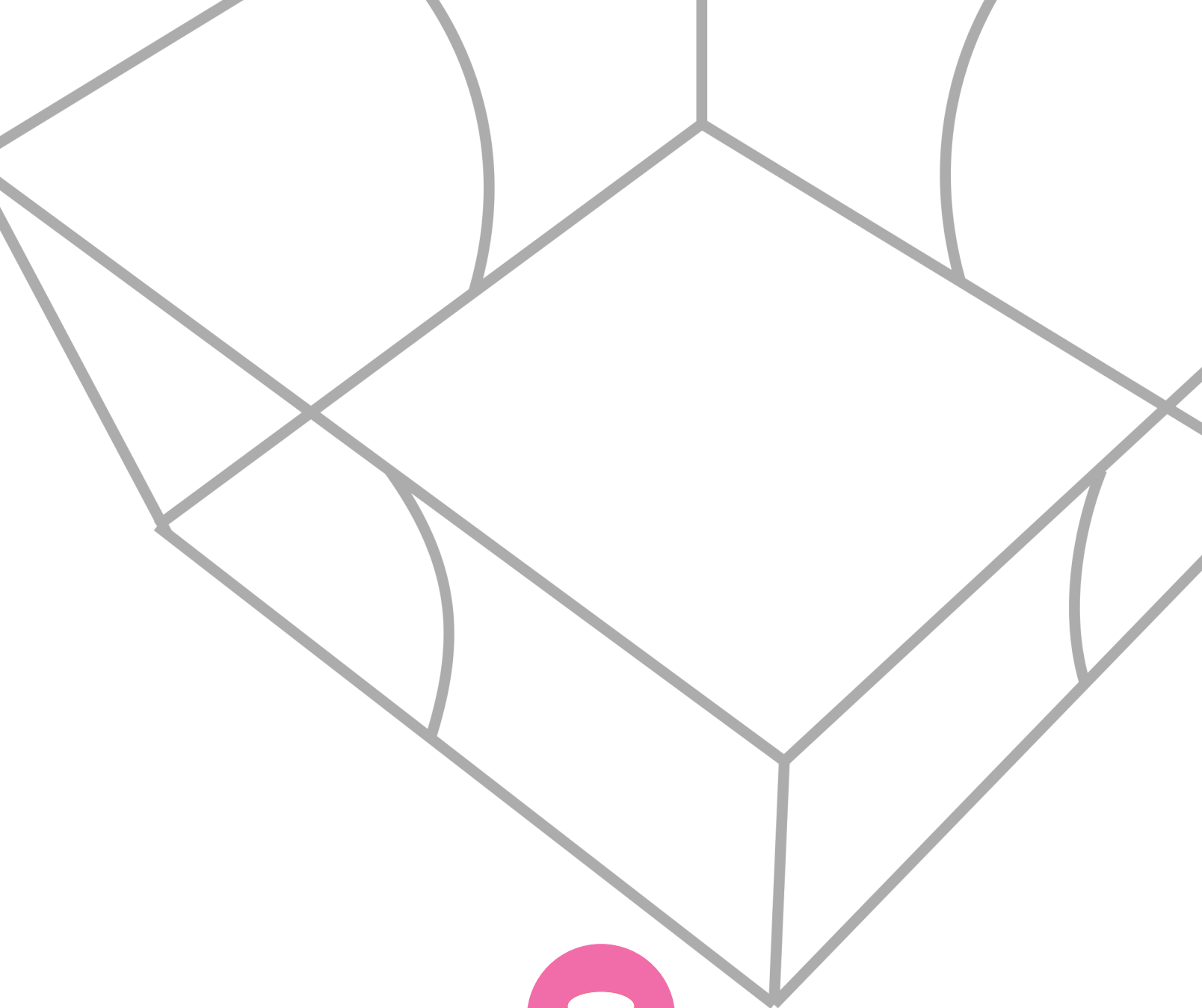
### Options

#### Hanging Hardware

\*for 15 ft. or higher displays

\*added stabilization





# HANGING BANNERS

Dude, where's your booth? Get seen from practically anywhere with the Skybox Hanging Banner above your booth. Guide exhibitors your way like the stars in the sky. American-made fabric graphics stretch and zip shut over the all-aluminum, durable frame. Styles available include circles, squares, triangles, pinwheels, etc. Height and diameter sizes vary. New larger 20 ft. diameter size now available for circle and square shapes. Includes soft carry bag.



CIRCLE

SQUARE

TRIANGLE

TAPERED SQUARE

CURVED SQUARE

TAPERED TRIANGLE

TAPERED CIRCLE

FOOTBALL

WAVE

PINWHEEL

**Package includes:**

- (1) Collapsible extruded aluminum hanging sign frame (includes curved stabilizer, quarter circle, curved connector.)
- (1) Full color zippered tension fabric graphic print
- Nylon travel bag
- Hanging cable
- Chain, spring, eye hook, large screw, hook loop lock & screw tightener

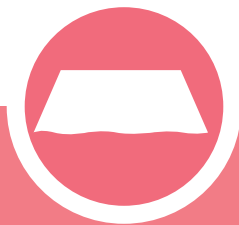
- Options**
- **Single-Sided:** You can choose between white or black fabric for the inner lining.
  - **Double-Sided:** Additional 50% of the outside package price will be charged.

\*Frame only prices and double-sided graphic prices are also available on website.

**LA CAJA HARD CASE**

Optional La Caja Hard Case is available for some shapes/sizes as an optional case. Check website for more details.





# TABLE THROWS

Table Throws are a great addition to your trade show booth and are sized to fit standard 4ft, 6ft and 8ft tables. Available in full graphic prints. There are two different styles available to suit your needs. The open back version has a full-length front and side material with a shorter edge on the backside. The full back version has full length material on the front, back and both sides of the table.



Back (3-sided)



Back (4-sided)



4 ft. Standard Throw



6 ft. Standard Throw



8 ft. Standard Throw

## Options



Carry Bag  
\*Holds 2 Table Throws.



FITTED TABLE THROW



8 ft. Fitted Throw



4 ft. Fitted Throw



6 ft. Fitted Throw

STRETCH TABLE THROW



8ft. Stretch Throw



4ft. Stretch Throw



6ft. Stretch Throw

TABLE RUNNER

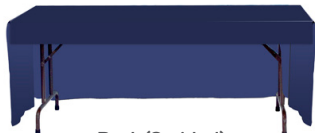


Back (Open Back)

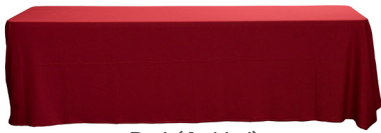


Back (Full Back)

TABLE THROW STOCK COLOR



Back (3-sided)



Back (4-sided)



AVAILABLE TABLE THROW COLORS:

- Blue PMS 286C
- Yellow PMS 1235C
- Lime Green PMS 354C
- Hunter Green PMS 350C
- Burgundy PMS 202C
- Gray PMS 428C
- Black
- White

AVAILABLE LOGO COLORS:

- Blue PMS 2945C
- Dark Blue PMS 282C
- Green PMS 348C
- Dark Red PMS 201C
- Yellow PMS 124C
- Black
- White

LOGO SPECIFICATIONS:

ACCEPTABLE	UNACCEPTABLE
<p>1st</p> <p>2 COLOR LOGO</p> <p>zakenkantoor <b>SMITS</b> VERZEKERINGEN</p> <p>2nd</p> <p>1 COLOR LOGO</p> <p>1st</p> <p>Mandalay LUXURY DIVISION</p>	<p>GRADIENTS</p> <p>DROP SHADOWS</p> <p>Tactical Vision Creative Graphics &amp; Web</p> <p>MORE THAN 2 COLORS</p> <p>Servicio al Cliente</p> <p>TO COMPLEX</p> <p>AntiParticle</p>

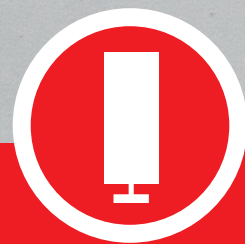
\*Logo(s) that have more than 2 colors or are too complex will not work for the Heat Press system.

Options



Carry Bag  
\*Holds 2 Table Throws.





## DISPLAY STANDS

Looking for an interactive attraction? Engage others with the brand new Jotter Tablet Display—a great tool for trade shows, office lobbies, or retail! The Jotter stand has a pivotal head, allowing you to rotate the tablet 360° and adjust the angle 135°. Simply insert the tablet and use the key to lock the case. The tablet is snug, secure and ready to use. The case allows for a working front and back camera as well. Use them anywhere you want to be hands-free. The Jotter Tabletop Tablet Display can be used to customize any display or countertop. To mount, simply drill into desired tabletop or display, and voila! Compatible with 2nd, 3rd and 4th generation iPad tablets. Available in 3 styles. Choose from Black or White.



**JOTTER TABLET STAND A**  
(STAND ONLY)  
Product Code: JTS-A



**JOTTER TABLET STAND B**  
(STAND ONLY)  
Product Code: JTS-B



**JOTTER TABLET TABLETOP**  
(STAND ONLY)  
Product Code: JTS-C



**JOTTER Brochure Holder**  
Product Code: JTS-BH



**JOTTER Back Banner**  
Product Code: JTS-ABBA



**IS-1**  
(STAND ONLY)  
Product Code: IS1  
Base Size: 10"W x 14"H



**IS-2**  
(STAND ONLY)  
Product Code: IS2  
Frame Height: 60"H



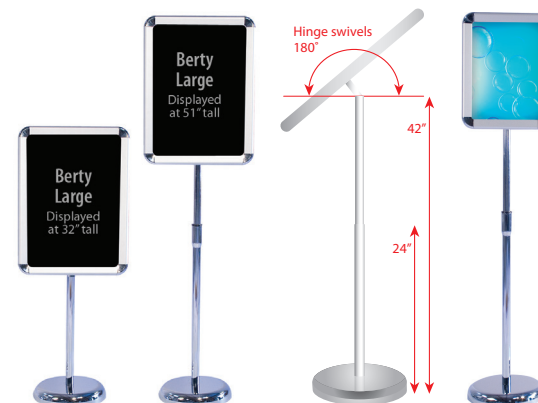
**ALUMINUM SNAP FRAME**  
(STAND ONLY)  
Product Code: ASF  
Frame Size: 25.5"W x 46.5"H



**SPRING SNAP FRAME**  
(STAND ONLY)  
Product Code: SSF  
Frame Size: 32"W x 46.5"H x 20"D



**BERTY SNAP FRAME**  
(STAND ONLY)  
Product Code: BSFSM  
(STAND ONLY)  
Product Code: BSFLG



**WATER BASE SNAP FRAME**  
(STAND ONLY)  
Product Code: WBSF  
Frame Size: 32"W x 46.5"H x 20"D





# LITERATURE STANDS

## EZ FROST SINGLE

Product Code: LIT-EZF1  
Dual Height Options: 50.5" and 59"  
Base Size: 10.5"W x 14"D  
Display Area: 9"W x 12.25"H  
Case Size: 19"W x 13"H x 7.5"D



Includes deluxe hard case

## EZ FROST DOUBLE

Product Code: LIT-EZF2  
Dual Height Options: 50.5" and 59"  
Base Size: 17.5"W x 14"D  
Display Area: 16.5"W x 12"H  
Case Size: 21"W x 17.5"H x 6.75"D



Includes deluxe hard case

## MESH SINGLE

Product Code: LIT-MESH1  
Display Size: 11.25"W x 45"H



## MESH DOUBLE

Product Code: LIT-MESH2  
Display Size: 20.25"W x 45"H



## 5 STEPS

Product Code: LIT-5STEP  
Display Size: 9"W x 56"H  
Collapsed Size: 9"W x 11 1/2"L x 13"H



Includes deluxe hard case

## MESA

Product Code: LIT-MESA  
Table Size: 20.25"W x 14.5"D  
Stand Height: 39"  
Base Size: 14.5"W x 10"D



Includes deluxe hard case

# CASES & BAGS

## LA CAJA HARD CASE w/ Wheels & Handle

Product Code: LACAJA  
Outside Dimensions: 18"x 67"x 11.5"  
Inside Dimensions: 16.9" x 64.6" x 10.6"  
Weight: 21 lbs



### Application:

- \* Casita Canopy
- \* Mammoth
- \* Hanging Banners (some of the sizes/shapes)

## LA CAJA HARD CASE (SMALL) w/ Wheels & Handle

Product Code: LACAJAS  
Outside Dimensions 53" x 16.9" x 10.6"  
Inside Dimensions 52.4" x 16" x 10.6"  
Weight: 13 lbs



### Application:

- \* Resort Extrusions,
- \* Retractable Stands (some of the sizes/shapes)

## SILVER BAG 24 in.

Product Code: SBAG24  
Dimensions:  
28.5"W x 12"H x 4"D  
Weight: 5 lbs



## SILVER BAG 33.5 in.

Product Code: SBAG335  
Dimensions:  
37"W x 12"H x 4"D  
Weight: 6 lbs



## SILVER BAG 36 in.

Product Code: SBAG36  
Dimensions:  
41"W x 12"H x 4"D  
Weight: 6 lbs



## SILVER BAG 48 in.

Product Code: SBAG48  
Dimensions:  
51.5"W x 12"H x 4"D  
Weight: 7 lbs



## SILVER BAG 60 in. w/ Wheels

Product Code: SBAG60  
Dimensions:  
64"W x 12"H x 4"D  
Weight: 9 lbs



## GRASSHOPPER BAG

### Small

Product Code: G-BAGSM  
Dimensions: 44"W x 6"H  
Weight: 2 lbs



### Medium/Large

Product Code: G-BAGMDLG  
Dimensions: 55.5"W x 6.5"H  
Weight: 2 lbs



## X-BAG

### XSM

Dimensions: 36"W x 4"H x 4"D  
Weight: 3 lbs



### XMD & XLG

Dimensions: 48"W x 4"H x 4"D  
Weight: 3 lbs



## PODIUM CASE

Product Code: PU-POD  
Outside Dimensions:  
27.5"W x 39"H x 15.75"D  
Inside Dimensions:  
25"W x 31.75"H x 14.25"D  
Weight: 31 lbs



### Application:

- \* Pop Up Display
- \* Optional Graphic Wrap is available.

## MEDIUM HARD CASE

Product Code: MHC  
Outside Dimensions:  
22"W x 39"H x 17"D  
Inside Dimensions:  
20.5"W x 32.5"H x 12"D  
Weight: 31 lbs



### Application:

- \* Ready Pop Fabric Pop Up (Medium/Large)
- \* Optional Graphic Wrap is available.



# LIGHTS

## LADDER LIGHT

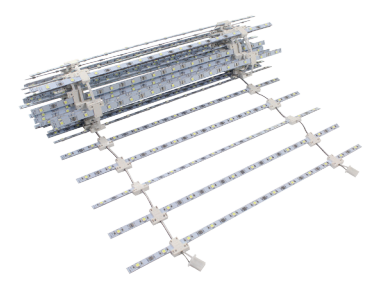
Product Code: RESORT-LDLTS

### Application:

- \* Mammoth
- \* Vail-60S / 100D / 120D / 120DB



Transformer



## ASPEN LED LARGE LIGHT

Product Code: AF-LIGHTLG  
Dimensions: 6" x 6" x 24"  
Weight: 2 lbs

### Application:

- \* Aspen Fabric Frame



## ASPEN SMALL LIGHT

Product Code: AF-LIGHTSM  
Dimensions: 4" x 4" x 20"  
Weight: 2 lbs

### Application:

- \* Aspen Fabric Frame



## T135 LED LIGHT

Product Code: T135  
Weight: 2 lbs

### Application:

- \* Pop Up Display
- \* Fabric Pop Up Display
- \* Tahoe Modular Display
- \* Aspen Fabric Frame



## POP UP LED LIGHT

Product Code: PU-LEDLIGHT  
Shipping Dimensions: 6" x 6" x 24"  
Weight: 2 lbs

### Application:

- \* Pop Up Display



## READY POP LED LIGHT

Product Code: RP-LEDLIGHT  
Shipping Dimensions: 6" x 6" x 24"  
Weight: 2 lbs

### Application:

- \* Fabric Pop Up Display



## EZ TUBE LED LIGHT

Product Code: EZT-LEDLIGHT  
Shipping Dimensions: 6" x 6" x 24"  
Weight: 3 lbs

### Application:

- \* EZ Tube Display



## CLAMP LIGHT

Product Code: CLIGHT  
Dimensions: 6" x 6" x 24"  
Weight: 2 lbs

### Application:

- \* Retractable Banner Stand
- \* L Banner Stand



## CLAMP LED LIGHT

Product Code: CLEDLIGHT  
Dimensions: 6" x 6" x 24"  
Weight: 2 lbs

### Application:

- \* Retractable Banner Stand
- \* L Banner Stand



## VEGAS LIGHT

Product Code: VLIGHT  
Dimensions: 4" x 4" x 20"  
Weight: 2 lbs

### Application:

- \* Pop Up Displays
- \* Ready Pop Fabric Display



## SILVER LIGHT

Product Code: SLIGHT  
Cord: 8.6 ft.  
50W  
Dimensions: 4" x 4" x 20"  
Weight: 2 lbs

### Application:

- \* Retractable Banner Stand



## BLACK LIGHT

Product Code: BLIGHT  
Cord: 8.6 ft.  
50W  
Dimensions: 4" x 4" x 20"  
Weight: 2 lbs

### Application:

- \* Retractable Banner Stand



## RESORT LIGHT STRIP

Product Code: RESORT-LS

### Application:

- \* Mammoth
- \* Whistler
- \* Vail-60S / 100D / 120D / 120DB



# PRINTING SERVICES

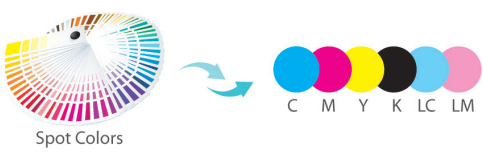
## DIGITAL PRINTING COLOR INFORMATION

### OFFSET VS. DIGITAL

Digital printing offers a shorter turnaround and more consistent end results than offset printing. Digital printers do not print PMS and RGB colors. These colors will have color shifts.

### PMS (SPOT COLOR) MATCHING

Although digital printers do not print PMS colors, our production team will manually adjust the color output to match your spot colors upon request (per color/material). Please ask us about our PMS Color Matching service when you upload your files.



## FINISHING OPTIONS



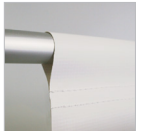
### GROMMET

Banner edges are hemmed with #2 grommets in corners.  
\* Available grommet colors: brass, silver & black.



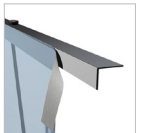
### POLE POCKET

The top and/or bottom of the banner is folded over and sewn, creating a pocket that accepts dowels.



### HOOK & LOOP

Banners attach via hook & loop strips on top and/or bottom.



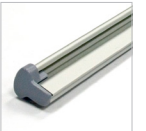
### HEM

Banner edges are folded over and stitched with white thread.



### CLAMP

Top and/or bottom bars clamp to banner.



### MAGNET

Magnetic strips on sides of panels attach to channel bars on frame.



## PRINTING METHODS

### THERMAL TRANSFER (HEAT PRESS)

Our thermal transfers allow 1 to 2 color images to be applied to our stock table throw and stock casita canopy products. Using thermal transfer vinyl, we die-cut and weed your image, then apply it to the stock product using a high temperature, large format heat press.

**Used for:** Casita Canopy Stock, Table Throw Stock, Skycap Umbrella Stock

### DIGITAL INKJET LAMINATED PRINTING

Using a high resolution, 4-color process, we are able to output images up to 1080dpi onto titanium film media. Once this entire image is printed, we overlay laminate—using a cold-process laminator—for durability.

**Used for:** Laminated Display Film, Pop Up Wave Display

### UV PRINTING

Using the 4-color process (plus light cyan and light magenta), we create weather resistant images for outdoor graphics using ultraviolet curable inks.

**Used for:** UV Hybrid Vinyl, UV Super Flat Vinyl, Scrim Vinyl, UV Casita Canopy, UV Backlit, PVC

### DYE-SUBLIMATION

The direct-to-fabric printing process applies the ink directly to the fabric using the 4-color process. The print then goes through the sublimation process of heat-plus-time to create beautiful, photo images.

**Used for:** All Fabric (except UV Fabrics)



